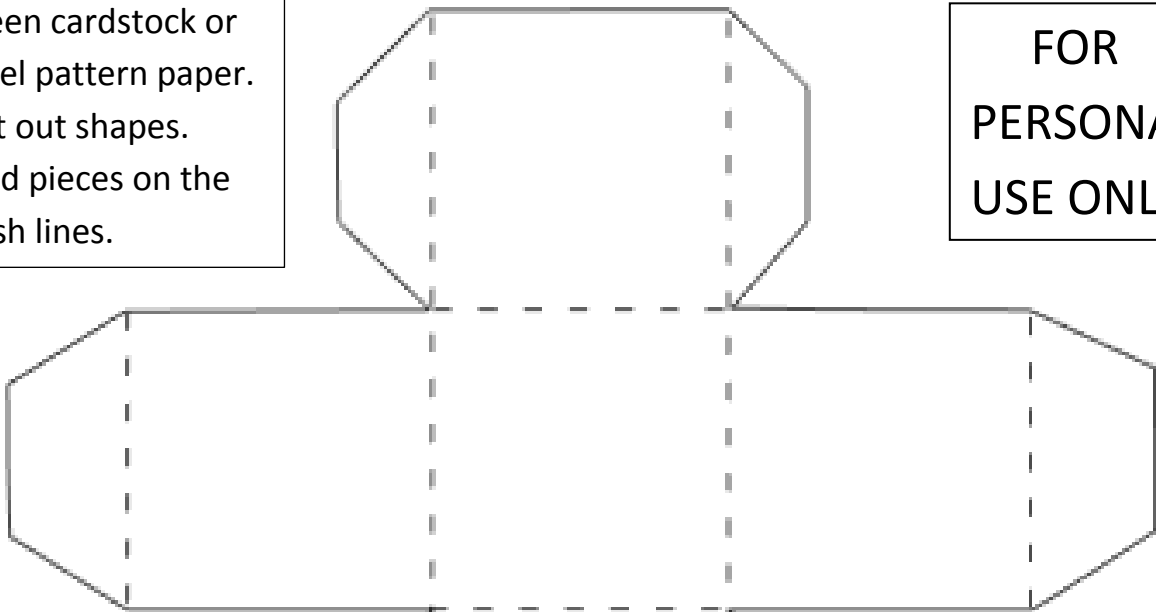
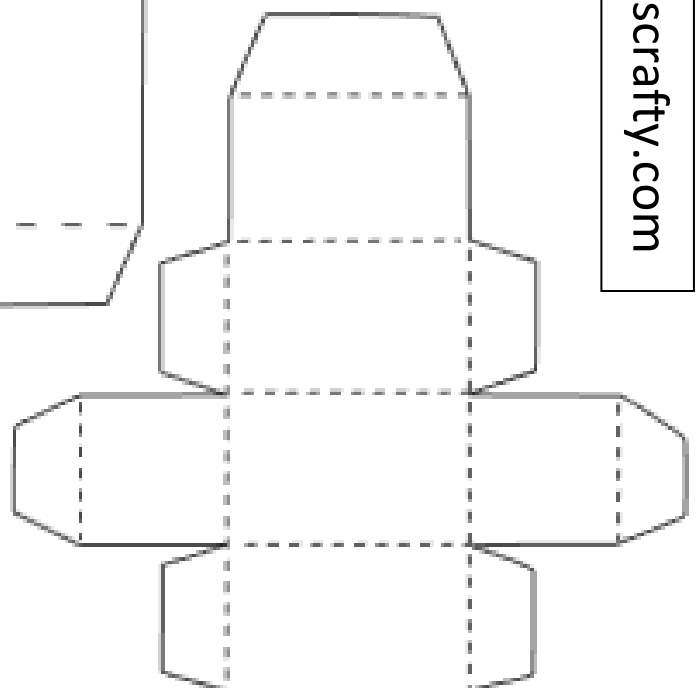
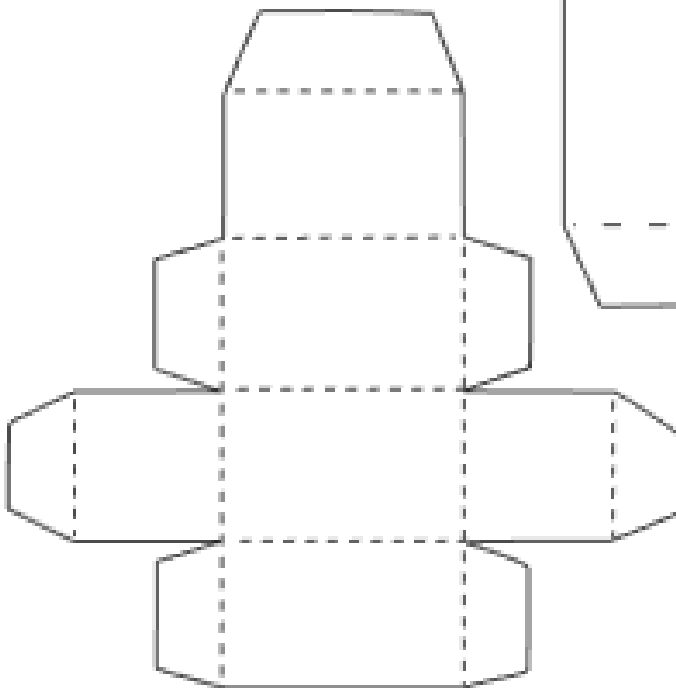
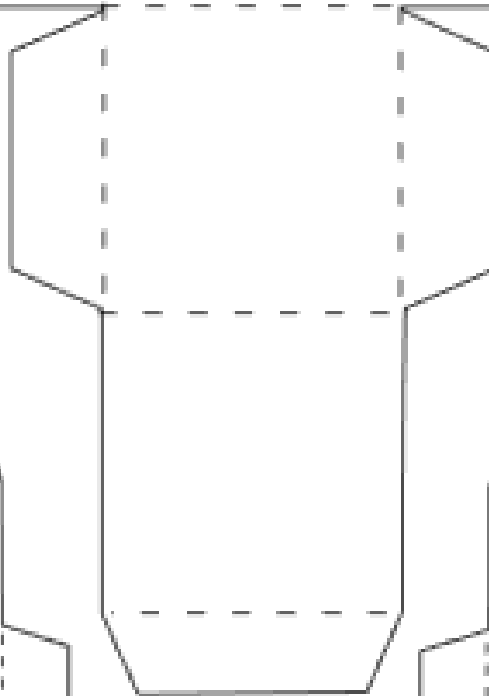


1. Print pages onto green cardstock or pixel pattern paper.
2. Cut out shapes.
3. Fold pieces on the dash lines.

FOR  
PERSONAL  
USE ONLY

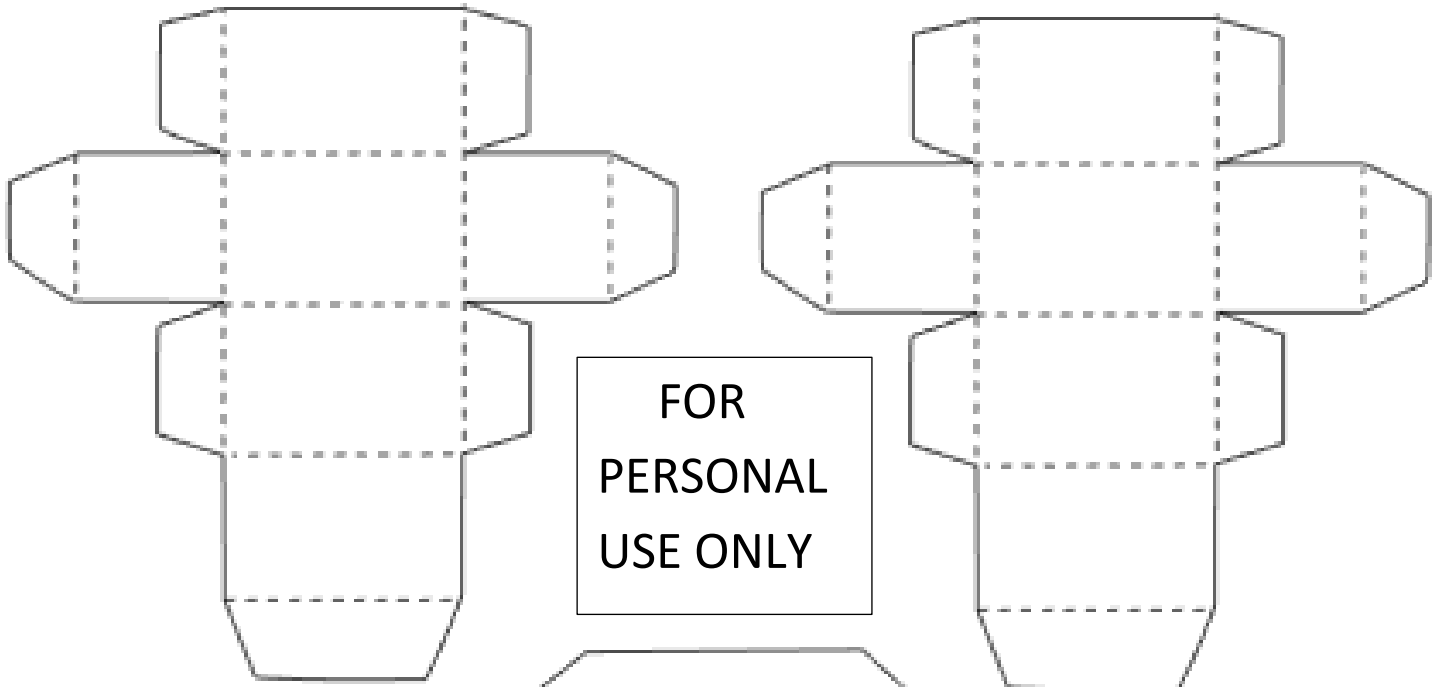


4. Glue tabs, closing in each box shape.
- NOTE:** If you want to use the head to fill in with treats, **DO NOT** glue top tab in place.

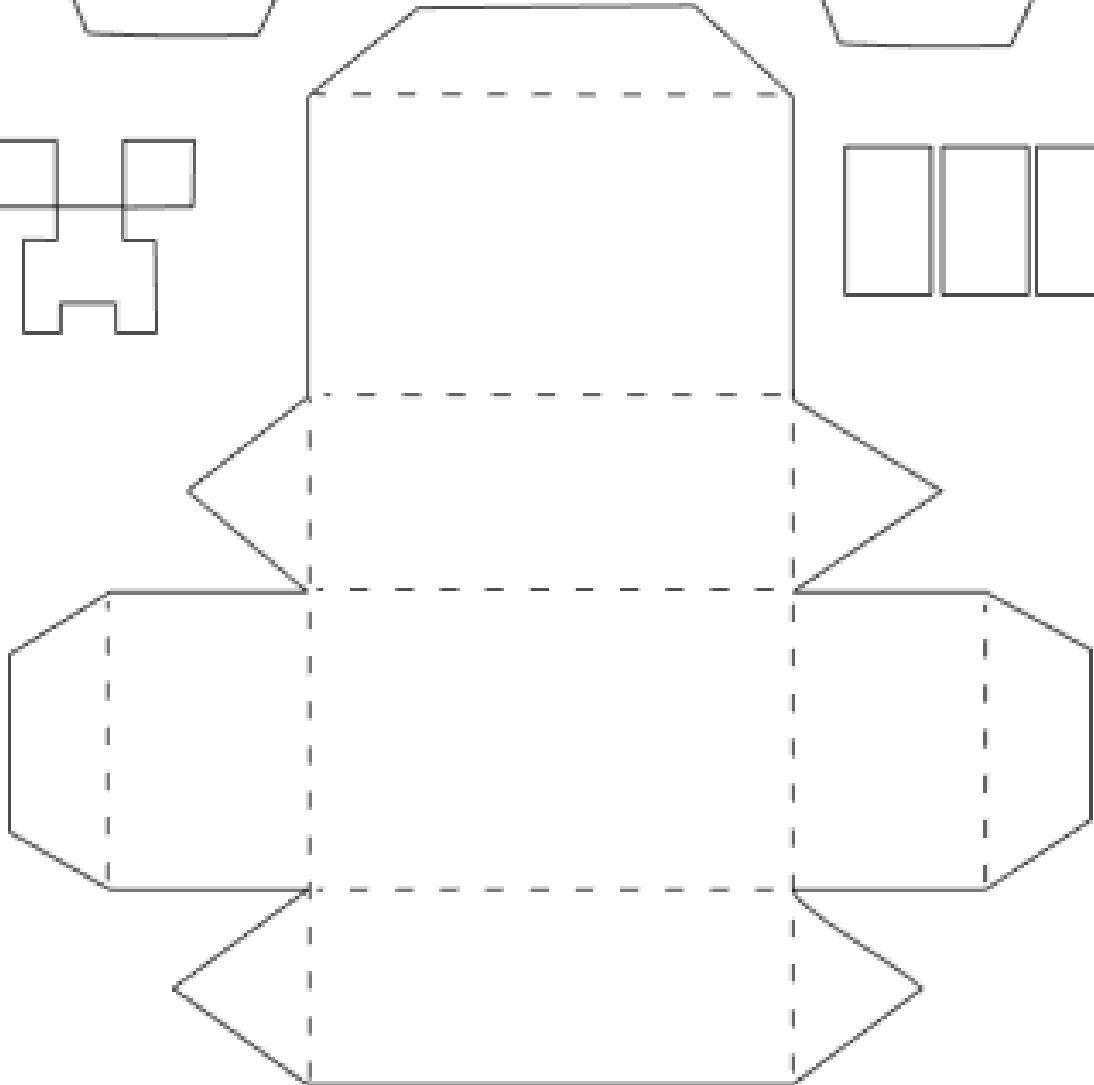
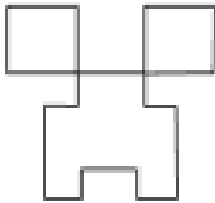


ilovedoingallthingscrafty.com

# 3D MINECRAFT CREEPER TREAT BOX



FOR  
PERSONAL  
USE ONLY



5. Glue head to the body, and then the four legs.  
6. Color face and feet black, glue in place.